

BESV CPT Quick Start Guide

Congratulations! You have just purchased the finest pedal-assisted electric bicycle in the market today.

Your e-bike can be pedaled like a normal bike, and it can assist you while you pedal. Be sure to read this Quick Start Guide before you start an amazing ride with your e-bike.



This Quick Start Guide is not intended as a comprehensive document.

Introduction

Pedelec (A Type of E-Bike)

A pedelec is an electrically assisted bike that provides assistance when and only when you pedal. In most countries, there are laws regarding pedelec design and the use of pedelecs. For example, the maximum assisted speed is 25 km/h (15.5 mph) in European countries.

Intended Use

- For your safety and for avoiding damages to your bike, please make sure your pedelec is used according to its intended use (city-trekking bike). If you have other needs, such as off-road riding, please select other suitable bikes for your safety.
- While this bike works with certified child seats, the rider is responsible for proper installation and use and assumes all risk when riding with additional passengers.
- Pedelecs are not designed to limit users' stature, perception, or mental ability; however, EN regulations strongly advise that children under 14 years old should refrain from riding pedelecs. (Please consult local regulations, as age restrictions may vary.)
- The maximum gross weight of the e-bike, including the weight of rider, accessories and/or cargo, is under 140 kg (308 lbs). Do not exceed the allowable gross weight. It is also not designed to pull or tow another bike, trailer, or any other items via a connection system.

Cleaning and Maintenance

To keep your BESV CPT in excellent condition, please make sure to follow the comprehensive guidelines in the full user manual.

Key

BESV CPT comes with two keys. We recommend that you keep one in a safe location as the spare key.

The frame lock and the battery lock shares the same key.

Notes on Accessories

- If you are to add a bottle cage, please avoid overtightening the bottle cage screws to prevent damage to the bike. (Max.: 6 N-m)
- When using the front and rear carriers, please always adhere to the maximum permissible weight.

User Manual

This Quick Start Guide gives you a general overview of your bike and provides model-specific information. A separate User Manual covers all pedelec-related information in more depth, please remember to read it and understand the contents before using your bike.

Pre-Riding Checklist

Please check the following before riding your e-bike:

- Check if all parts of the e-bike is undamaged and can function properly.
- Check all bolted and connecting parts of the bike are secured in place.
- Test ride to check if there is any abnormal noise from your e-bike.
- Check that the brake pads are not overly worn; and ensure brake system is working properly.
- Test to see if you can pedal smoothly.
- Check if the transmission system allows you to shift gears smoothly.
- Make sure saddle height adjustment does not exceed the minimum seatpost insertion depth requirement.
- Make sure tire pressure is within recommended range, and pressure is not dropping abnormally; as well as tire tread depths are sufficient.
- Check if the battery has enough capacity for your upcoming ride. Check if the electronic system and HMI are working properly.

If you find anything to be abnormal, please refrain from riding and contact authorized service center for assistance.

BESV CPT

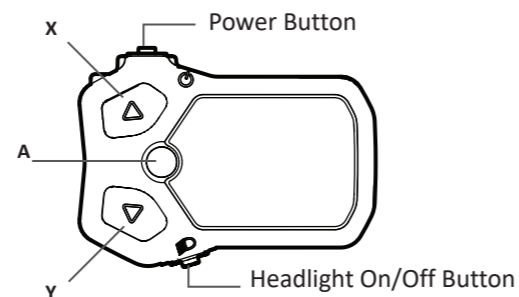
where smart design meets city life.

All illustrations are mainly for reference purposes. Manual details are subjects to change for improvement without prior notice, please refer to manufacturer's latest information.

© Copyright 2024 BESV Europe B.V. and Darad Innovation Corp. All rights reserved. All trademarks, logos, and brand names mentioned in this document are the property of their respective owners.

49.Y4Q01.001

Introducing HMI Functions

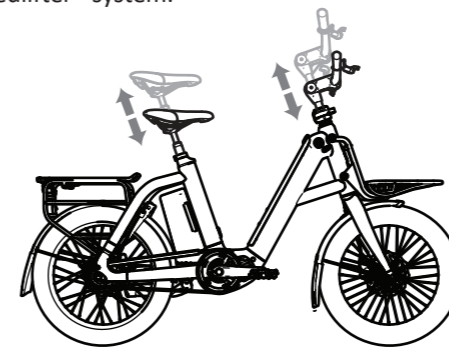


| | While Riding | While Setting |
|---|-----------------------|---|
| A | Switch data displayed | Switch screens Confirm setting changes |
| X | Assist Up | Move up selection/value |
| Y | Assist Down | Move down selection/value |

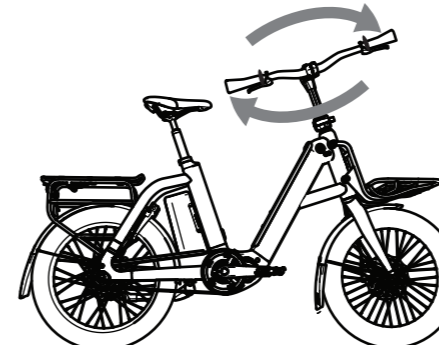
*HMI=Human Machine Interface. Details on how to use the HMI (display + switch), please refer to the respective models' User Manuals from Shimano.

Adjust to Fit

Easily adjust the stem/handlebars to fit with CPT's feature—the Speedlifter® system.

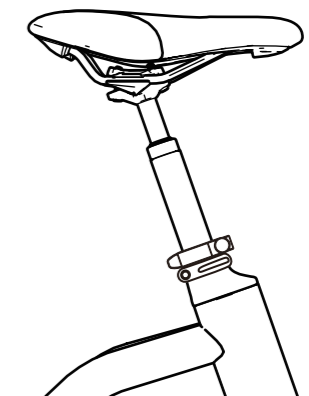


You may also turn the handlebars for easier storage.



⚠ Mind the cables and lines while adjusting to avoid damages. Always test after adjustment to ensure smooth handlebars rotation and e-bike functionality.

The seatpost of your e-bike is secured in place by two clamps. These clamps work together to allow you to adjust the height and angle of the seat to your desired position.



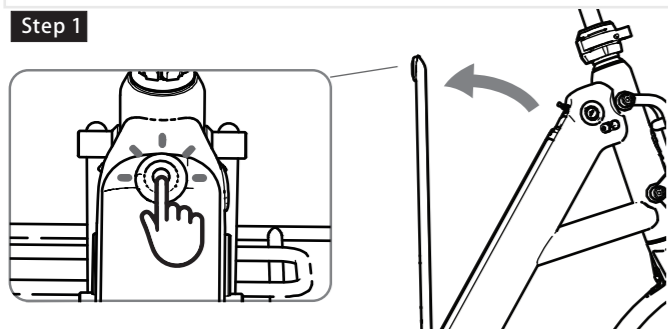
CPT 1.0 & 1.2 also feature a suspension seatpost.

⚠ Please ensure to meet the minimum seatpost insertion depth requirement. (The mark on the seatpost should be covered by the seat tube.)

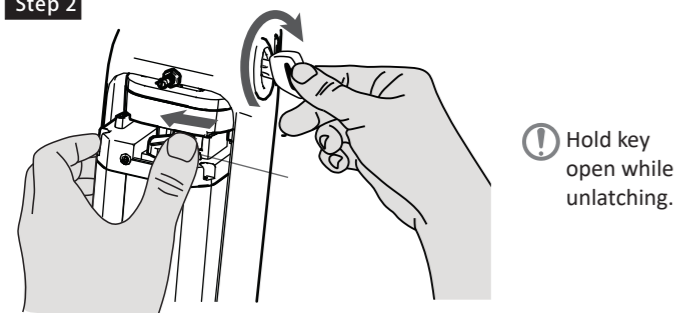
Ensure the seatpost clamps are tightened securely before riding.

Battery Removal Instructions

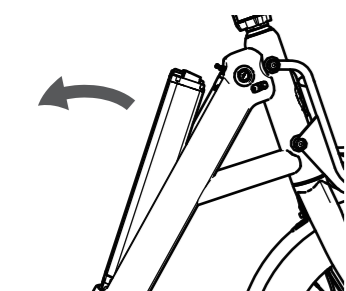
Step 1



Step 2



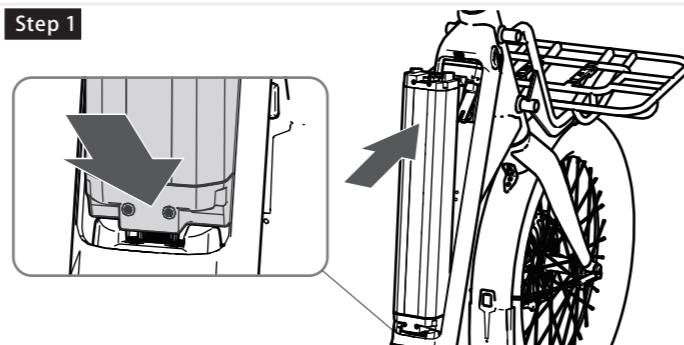
Hold key open while unlatching.



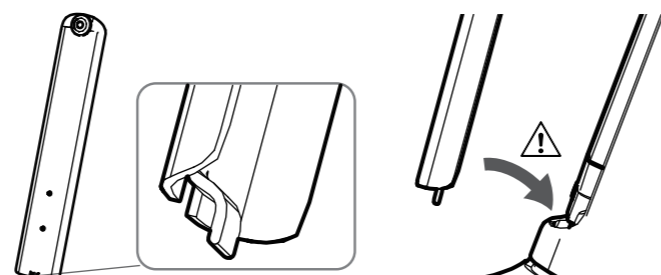
- Please handle battery with both hands!
- Restore cover to avoid foreign objects falling in.

Battery Installation Instructions

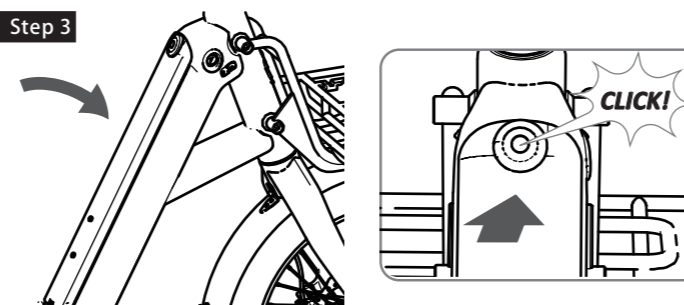
Step 1



Step 2



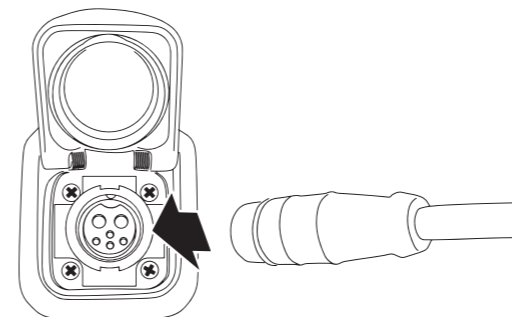
Step 3



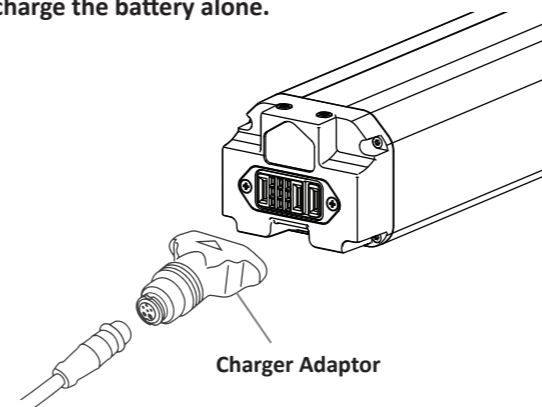
Methods to Recharge

1. Recharge directly on the bike.

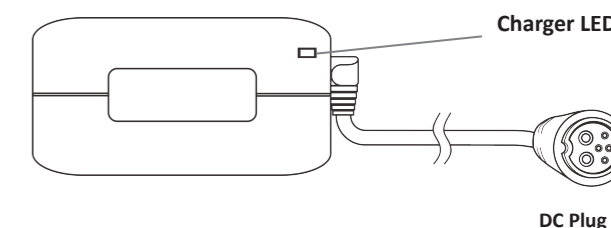
- ⚠ When not in use, please make sure to close the charging port cover on the frame properly.



2. Recharge the battery alone.



Charger Guide



Acceptable charger input voltage: 100V~240V

- ⚠ Always connect the AC plug into the outlet first, then the DC plug.
- Seek assistance from authorized professionals if charger is signaling error.

| LED Display | | Charger Status |
|-------------|-----------------|--|
| ● | Green | AC power connected; Battery not connected. |
| ⦿ | Red Flashing | Charging |
| ● | Green | Fully Charged |
| ⦿ | Orange Flashing | Battery or charger error |

General Battery and Charger Precautions

- Please fully charge the battery before the first use.
- Recharge regularly, at least once every 3 months, to prevent complete battery depletion.
- When not in use for an extended period, it is advised to maintain the capacity between 30%~70%.

• If the charger cable, plug or the outlet is damaged, wet or dirty, there is a risk of electric shock, which could be fatal. Under such conditions, please do not touch the items with bare hands and seek help from professionals.

• Use only the battery charger delivered with the product. Using any other charger could damage both the battery and charger, may cause overheating of the battery or even explosion.

• Do not submerge the charger in water. There are risks of electric shock or damage to the charger.

• Only use undamaged power cable and charger in dry state.

• Please protect your equipment from humidity, to avoid corrosion. Please store your CPT in dry environment.

• Do not open the equipment to reduce the risk of electrical shock. For safety reasons, it is only allowed to be opened by qualified service personnel.

• Do not expose the battery to high voltage.

• There is a fire risk if the temperature of battery rises up to a dangerous level.

• The battery and charger should be placed on fire-retardant surface and stay away from inflammable items when charging is in progress. Do not charge the battery while it is on a carpeted floor.

• Please do not store the battery near combustible items.

• Do not cover the charger during charging. There is a risk of

over-heating, fire or explosion.

• Remove any possible foreign object from the charging socket, such as dusts, ice or snow before plugging in.

• Deep discharging of battery may result in internal damage. Avoid deep discharging of battery while in use or storage.

• Avoid letting the battery experience sudden temperature changes.

• Please read all the instructions and warnings labels thoroughly before using the charger and battery.

• Replace damaged power cable and charger immediately.

• Please keep the battery away from children. Please ensure that children should not handle battery or charger without adult's supervision.

• If you detect that the battery becomes very hot, emits a strong odor, starts to deform or performs in an unexpected way while in use, being charged or in storage, please stop using the battery immediately.

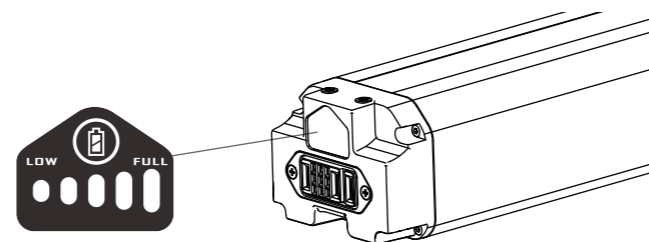
Scan the QR codes for detailed battery specifications and manuals.



CPT 1.0
Battery Model: E3COA



CPT 1.2/1.4
Battery Model: E3CO9



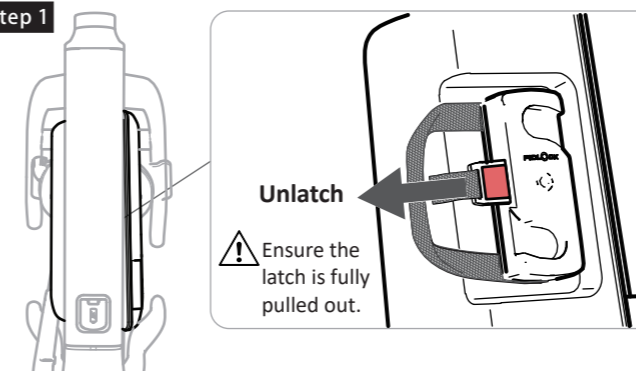
CPT 1.0 / 1.2 Bag

Our bicycle bag features a Fidlock® twist lock system for effortless attachment and removal.

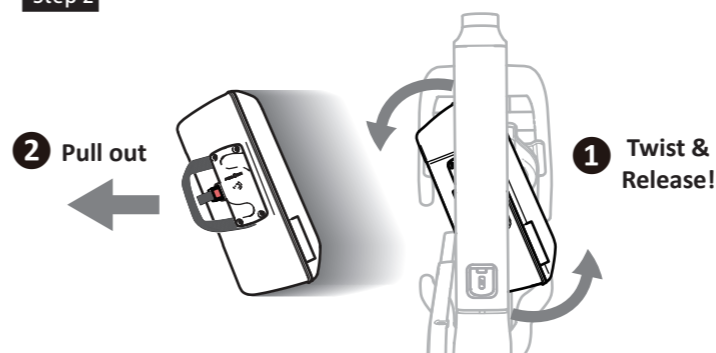
- ⚠ Lock + bag + contents' max. weight allowance: 1.5 Kg

To detach:

Step 1

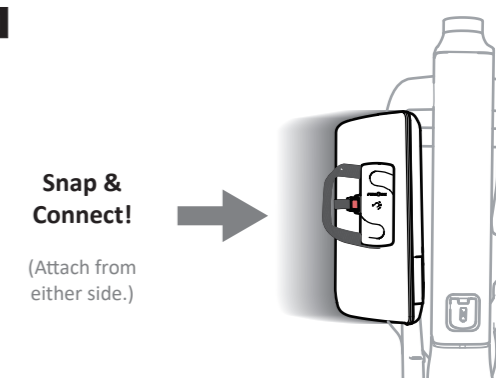


Step 2

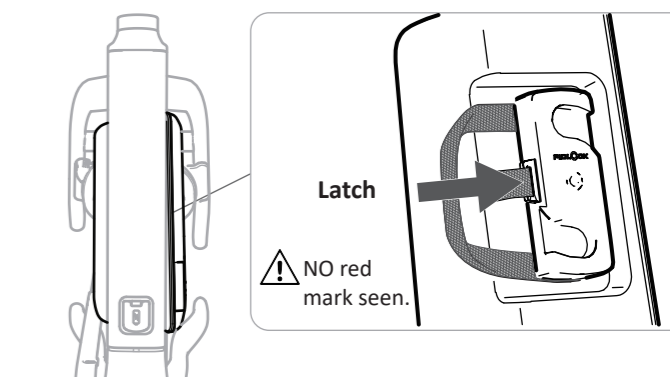


To attach:

Step 1



Step 2



- ⚠ Test applying pressure the bag to see if it is attached properly and securely. If not, please reattach and lock it properly to avoid the risk of it falling off during rides.